

REMODELING TO THE HIGHEST STANDARDS

IN THIS ISSUE:

- President's Message Pg 2
- Chapter Lunch Meetings - Pg 2
- NARI Committee Meetings - Pg 3
- Buy NARI - Pg 5
- Welcome New Member - Pg 6
- Remodeled Homes Tour Fast Facts - Pg 6
- Community Service Project - Pg 7
- Solid Rock Member Profile - Pg 8
- News to Know Pg 9
- CLC Study Group Pg 10
- REMY - Pg 12
- CRPM Study Group Pg 12

What is your Company Culture? August 26 Pre-Lunch Workshop with National Speaker!

All-In Culture Workshop runs from 9:30 to 10:45 at the Doubletree by Hilton--Workshop Fee \$30

Culture. It is the driving force in organizations that attracts great talent with less turnover, creates alignment within your team and ultimately affects the bottom line of your company.

Are you ready to take a deep dive into viewing your culture? If you don't know where to start or you need help prioritizing your focus, join Gail Hermesch in her workshop, All-In Culture.

- Do your employees come to work ready to roll up their sleeves and be the best version of themselves?
- Are they innovative and willing to share new ideas?
- Do they collaborate on a daily basis with little conflict?
- Is your company thriving the way you imagined it would be in 2021?

Lunch Keynote: Greatness Lies Within

Can you identify in your employees:

- What they bring to the table for your company, i.e., predictability, balance, decisiveness, etc.
- The best way to communicate with each individual
- What motivates this individual to give 100%?
- What actions, traits or situations that

will upset this individual and cause loss of production

- What this individual needs from the company/management to produce
- Some traits that may be good/bad for their position and may cause conflict with others

Gail Hermesch, Strategic Impact, certified leadership consultant and coach, will take you through a "LIVE" coaching session that offers employees the opportunity to identify and build upon their attributes. For the past 15 years Gail has worked as a certified leadership consultant and coach helping organizations drive positive and productive cultures.

KC NARI Lunch Fast Facts

Date: Thursday, August 26

Time: Pre-Lunch Workshop: 9:30-10:45
Lunch is 11:30 – 1:00, networking begins at 11!

BUY NARI Tabletop Sponsors: Capitol Federal Savings Bank and Builders FirstSource

Location: Doubletree by Hilton, 10100 College Blvd., Overland Park (College and 69 Highway)

Cost: Pre-Lunch Workshop is \$30. Lunch is \$32 with ADVANCE reservations; \$37 for those companies needing to be invoiced.

Please Note: All who reserve and don't attend will be invoiced. No walk-ins will be allowed due to the hotel guarantee 72 hours prior to event. Lunch will be a buffet served by hotel staff.

Deadline for Reservations is August 23.

RSVP via e-mail to kcnaari@RemodelingKC.com, call 913-362-8833, or register online. Go to www.RemodelingKC.com and sign up under the Events tab. **Masks in the meeting room are now optional. Masks are encouraged for all public spaces in the Doubletree including hallways, meeting registration table, bathrooms, etc.**

The President's Message

"Adhere to your purpose and you will soon feel as well as you ever did. On the contrary, if you falter, and give up, you will lose the power of keeping any resolution, and will regret it all your life."
Abraham Lincoln, June 28, 1862

I love watching the Olympics. I often find myself even watching events that normally would not interest me. There is something about these Olympic athletes. I think it's their personal stories that are so enticing.

The other night I watched as two high jumpers (not a sport I'd normally watch) shared a gold medal after both achieved the same height but neither could clear the next height. As the judge asked one of the competitors if they wanted to do a "jump off" for the gold medal, one competitor asked if they could share the medal instead? The judge agreed and both men embraced as gold medal Olympians. I couldn't understand why two competitors, one from Qatar and the other from Italy, would agree to share a medal.

As it turns out, the Italian competitor broke his ankle days before the 2016 Olympic games and was unable to compete. He was even told he may not ever be able to compete by a doctor. The other competitor from Qatar injured his ankle in 2018, so he knew of the struggle to get back to an elite level. Apparently these two men had also known each other for 20 years and even trained together.

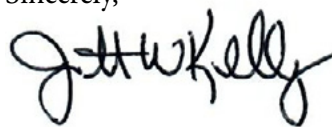
In the interviews afterwards, these men talked about their willingness to share the gold medal. It was the admiration and respect of the perseverance that each athlete saw in one another. They worked hard for several years to get to these games and overcame many challenges along the way. I would guess there are many more challenges than just the ones we read about.

We watch these athletes stand on a podium and accept the medals with tears in their eyes as their national anthem plays. What a great feeling it must be for these men and women to know the triumph of endurance. What we get to see is the fruit of their labor. I imagine there were many days they woke up early, most likely sore and tired from the day before. While their hearts and mind dreamed of a gold medal, I'm sure their bodies were telling them the process is too much. Yet here they are, persevering and competing.

I hope you all enjoyed watching the Olympic games as much as I did. Not necessarily for the sport (table tennis anyone?) but for the display of how powerful the human will to endure and persevere can be.

We all have the will power inside of us, and I hope we too endure and persevere to be what we are called to be!

Sincerely,



Jonathan Kelly
Fireplace & BBQ Center
913-383-2286
jkelly@fireplacecenterkc.com



Board Minutes

August—David Pikel, CEO of NARI Headquarters, joined the meeting via Zoom and updated the Board on news from the national perspective. They have budgeted \$250,000 for consumer marketing. The community service project is finished, and the chapter raised nearly \$12,000 in cash which allowed us to give the Rhodes family \$3,000 in VISA gift cards. One application was approved. The August 28 family picnic will be a small profit center for the chapter since it was not budgeted for in the 2021 approved budget. The Dec. 9 holiday party will also be Jan Burchett's retirement party and advance reservations will be required. The Board voted unanimously to keep committee and Board meetings hybrid with the option of Zooming in or attending in person. The Staffing Committee asked for a budget exception to allow for monies to pay for staffing payroll for the remainder of 2021 in light of them looking to hire a replacement for Jan Burchett.

2021 Chapter Meetings at Doubletree by Hilton in Overland Park

We are hosting our 2021 lunch meetings at the Doubletree by Hilton, 10100 College Blvd., Overland Park (College and 69 Highway). Mark your calendars for the remaining 2021 KC NARI chapter meetings:

Thurs., Aug. 26
Thurs., Sept. 30

Thurs., Oct. 28
Thurs., Nov. 18

Pending Applications

Central Surfaces

Amy Ferguson, Builder Account
Manager

Kansas City, MO

Quartz and natural stone countertop
fabricator since 2020

Chateau Global-STL

John Sollors, Owner
St. Charles, MO

Distributor of millboard since 2021

Enviro-Dry

George Quillin, Office Administrator;
Jason Short, Owner

Harrisonville, MO

Property preservation and restoration
since 2011

Fullswing Outdoor Living

Kendon McBee, President

Lee's Summit, MO

Premium design and build services
specializing in residential and
commercial outdoor living spaces since
2021

GlyNite Construction Services

Rosalyn Glynn, President
Kansas City, MO

Risk assessors for lead MO/KS,
trainers for EPA and KS since 1995
Sponsor: Doug Bennett, All-Weather
Windows, Doors & Siding

Kansas Spray Foam Insulation LLC

Diana Brauer, Business Operations
Manager
McLouth, KS

Spray foam insulation since 2016

Tall Grass Windows, Inc.

Bill Roche, President
Frankfort, KS

Multi-line window & door distributor
since 2017



KANSAS CITY NARI

8015 Shawnee Mission Pkwy. • Merriam, KS 66202

913-362-8833 • Fax: 913-362-8837

KCNARI@RemodelingKC.com • www.RemodelingKC.com

President

Jonathan Kelly
Fireplace & BBQ Center

First Vice President

Nick Shepard, CR
KC Home Solutions

Second Vice President

Jason Wright, CRS
Jason Wright Electric

Secretary

Steve Brattin
SVB Wood Floors

Treasurer

Mary Thompson, CR, CRPM,
Architectural Craftsmen

Directors

Lauren Balestrieri, UDCP, L Marie Interior
Design

Ryan Christopher, SVB Wood Floors
Lindsay Hicks, Habitat for Humanity of KC
Jon Otten, Capitol Federal Savings Bank
Derick Shackelford, CR, CRPM, CLC,
Shack Built

Chair

Judy Transue, CR, CRPM, UDCP
CHC Design-Build



KC NARI MEETINGS:

All meetings will be held in person at the
NARI office or via Zoom...your choice!

Board Meeting

Wednesday, September 1 - 3:30 p.m.

Jonathan Kelly, 2021 President
913-383-2286, jkelly@fireplacecenterkc.com

Advocacy Committee

Date TBD - 9:00 a.m.

Peggy Bruce, Chair
913-827-9952, peggy.bruce@vwealth.com

Education Committee

Wednesday, September 8 - 11:00 a.m.

Co-Chairs - Derick Shackelford, CR, CRPM,
CLC, 913-544-4819, dericks@shackbuilt.com
John Bruce
913-859-9150, jbruce@outdoorlights.com

Ethics & By-Laws Committee

Karl Dunivent, Chair
816-343-8887, kdunivent@choicecabinetkc.com

Marketing/PR Committee

Tuesday, September 14 - 9:00 a.m.

Co-Chairs - Phil Steinle
913-696-9758, Phil@centurymarketinginc.com
Joanna Schiller
913-321-4100, joanna@abcosupplyus.com

Membership Committee

Thursday, September 16 - 11:30 a.m.

Co-Chairs - Benita Brewer
913-339-8446, designergal@kc.rr.com
Ryan Christopher
816-965-8655, ryan@svbwoodfloors.com

Remodeled Homes Tour Committee

Tuesday, September 14 - 11:30 a.m.

Charlie Schloegel, CR, UDCP, Chair
816-361-9669, Charlie@remodelagain.com

Social Committee

Tuesday, September 7 - 11:30 a.m.

Christine Hawkins, Chair
913-915-9140, Christine.hayes@ferguson.com

Workforce Development Committee

Thursday, September 16 - 8:00 a.m.

Nick Shepard, CR, Chair
913-780-4498, nick@kchomesolutions.net



BUY NARI!

Features Capitol Federal Savings Bank

9500 Nall for Suzan Goerz and many other area locations

913-652-2541, www.capfed.com

Capitol Federal Savings Bank, Topeka, Kansas, “shall be the premier residential real estate lender and provider of enhanced retail financial services to individuals and families in each of its selected markets.” Founded in 1893, Capitol Federal currently has 750 employees.

At the August 26 lunch, Jon Otten, Rachael French and Suzan Goerz will showcase Cap Fed’s home improvement loan products. Jon served on the Finance Committee and currently serves on the Board of Directors. Cap Fed has been a Kansas City NARI corporate sponsor since its inception. They have been an active chapter member since joining in 1999.

Come meet Jon, Rachael and Suzan and you’ll have a chance to win one of three \$25 restaurant gift certificates.

BUY NARI!

Features Builders FirstSource

**7600 Wedd, Overland Park, plus locations in Grandview and Lee's Summit
913-962-5227, www.blldr.com**

Kansas City Building Supply was purchased by Builders FirstSource in November 2020. Builders FirstSource is the nation’s largest supplier of structural building products, value-added components, and services to the professional market for new residential construction and repair and remodeling.

“Our focus is on providing unparalleled service to both large and small customers. We provide an integrated solution to our customers to help them shorten construction cycle times, reduce construction costs, increase build quality, improve safety, and reduce waste. We manufacture roof and floor trusses, wall panels, stairs, vinyl windows, custom millwork and trim, and interior and exterior doors tailored to the specific needs of our customers. We carry a full line of professional grade building products, such as dimensional lumber and lumber sheet goods and various window, door, and millwork lines. We also offer

an extensive range of construction-related services, including design services, product installation, and turn-key framing. Builders FirstSource is your first source for great customer service and high quality building materials.

Come to the August 26 lunch and visit with Dennis Donnelly and his team from Builders FirstSource and you’ll have an opportunity to win nice door prizes!



The Rhodes family from the community service project were honored at the July lunch and were presented with \$3,000 in VISA gift cards from the generous donations of many NARI members. Left to right is Raul Perez, R&R Flooring & Home Improvement; The Rhodes family—Tom, Charlotte and Michael; Wendall Gartman, Gartman Remodeling; Raul A. Perez, R&R Flooring & Home Improvement; and Bob Quirk, Morgan Miller Plumbing.

BUSINESS BUILT TOGETHER

ACH...An Easy Payment Option for KC NARI and You!

Kansas City NARI is fully set up to use ACH for any payments for events, dues, sponsorships, etc. ACH (Automated Clearing House) is a network used for electronically moving money between bank accounts across the United States. We are always trying to find ways of reducing the overhead of the office and we are doing this by offering ACH transactions. We are still going to take credit cards, but they have a larger processing fee tied to them (Credit card is 3.31% versus ACH at 0.51%, per transaction).

If you are willing to have your payments to KC NARI be done with ACH, please email D.J. McEwen, kcnariDJ@RemodelingKC.com and she will get you a form and answer any questions you might have or fill out the form on page 16.

Welcome New Member!

Give him a call, shoot him an email, agree to meet him at the next NARI event. Welcome him to KC NARI!

First State Bank & Trust

Andrew Martin

10900 Parallel Parkway, Kansas City, KS 66109

(913) 721-1792

andrewm@firststateks.com

www.firststateks.com

Provide lending and deposit solutions to consumers and small businesses

BUSINESS BUILT TOGETHER

SUPPORT • PARTNER • CONNECT

KANSAS CITY NARI CHAPTER

Remodeled Homes Tour Fast Facts

Dates: Saturday and Sunday, September 18 & 19, 2021

Hours: Saturday 10am-5pm and Sunday 11am-4pm

Cost: \$20 per person; ticket is good both days of the Tour and allows entry into all 11 homes. Part of the ticket proceeds benefits KC NARI Futures Fund.

Project Locations:

1. 12210 Avila Dr., Kansas City, MO 64145, Kitchen Remodel by Comfort Remodel
2. 11926 Harrison Dr., Kansas City, MO 64146, Kitchen/Home Remodel by The Remodeling Pro
3. 15543 S. Shannan Ln., Olathe, KS 66062, Basement Remodel by Kansas City Remodel & Handyman Allen LLC
4. 6000 W. 90th St., Overland Park, KS 66207, Kitchen Addition & Remodel by REconstruct
5. 4808 W. 64th Terr., Prairie Village, KS 66208, Whole House Remodel by Schloegel Design Remodel
6. 5601 W. 69th St., Prairie Village, KS 66208, Master Suite Addition by RedesignKC
7. 4640 W. 71st St., Prairie Village, KS 66208, Whole House Remodel with Large Addition by Schloegel Design Remodel
8. 3305 W. 127th St., Leawood, KS 66209, Main Floor Remodel by Birkby Co.
9. 9801 W. 106th St., Overland Park, KS 66212, Kitchen, Living Room & Office Remodel by Aldrich Contracting Co.
10. 12909 Farley St., Overland Park, KS 66213, Kitchen & 1st Floor Remodel by Brackmann Construction, Inc.
11. 12737 W. 76th St., Shawnee, KS 66216, Whole House & Exterior Remodel by Martanne Construction

Thanks to our Tour sponsors: Crown Cabinetry, Ferguson/Factory Direct Bath, Kitchen & Lighting Gallery, One Stop Decorating Center, Roth Living, ProSource, Bath & Kitchen Idea Center by Grandview Winnelson, CKF, Albert Tamm Lumber, Legendary Stone and Locks & Pulls



NARI CARES! Community Service Project!

The Rhodes family finally has an accessible bathroom for their grown son, Michael, who has been wheelchair-bound his entire life. Over 50 Kansas City NARI members contributed labor, materials and nearly \$12,000 in cash donations to make this community service project happen. NARI members love to give back to the community in which they live and work despite being crazy busy with staff shortages and material delays. With all the donations, we were able to present the family with \$3,000 in VISA gift cards at the July chapter lunch. KC NARI members ROCK!

Thanks to the following members who supported the bathroom remodel for the Rhodes family with cash, materials and/or labor donations:

Architectural Craftsmen
Bath & Kitchen Idea Center by Grandview Winnelson
Black Oak Construction
Blossom Spaces
Brackmann Construction
Jan Burchett
CHC Design-Build
CMP Construction
Crown Cabinetry
CSW
Custom Wood Products
Deatherage Home Designs
Jenna Dighero
Gretchen Evans
Ferguson Bath, Kitchen & Lighting Gallery
Fireplace & BarBQ Center
Fresh Coat Paint & Stain
Frontier Restoration
Gartman Remodeling
Great American Building Materials
Hammer & Nails
Hayes Insulation
Hearthmasters
Heiman Development
Lindsay Hicks
Interiors by Melody
J III Enterprises
Jason Wright Electric
Johnson County Siding & Window
KC Home Solutions
KC RELO
Sonya Lange
Sid Lehrbaum
L Marie Interior Design
Morgan Miller Plumbing

Mike O'Connell, MCRS, GCP, CAPS

Jon Otten

Chris Peterson, MCR, CRPM, CLC

ProSource

R & R Flooring & Home Improvement

John Roach, retired, Roach Brothers Construction

Scovell Remodeling

Shack Built

Stevermer Co.

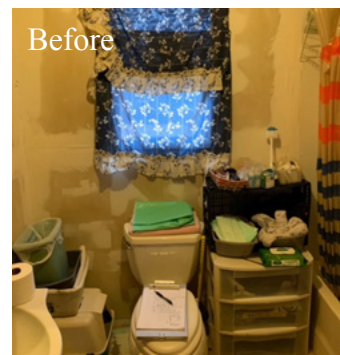
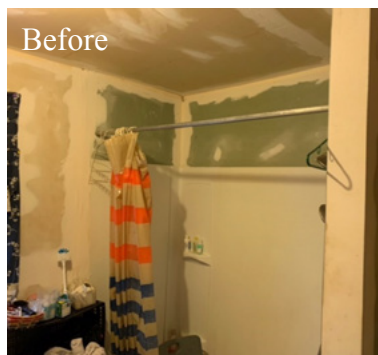
Suiter Business Builders

Titan Environmental Services

Top Notch Heating & Cooling

Total Home Remodeling

Wineteer



Solid Rock Member Profile

Honoring Long Time Chapter Members

**Bill Brackmann, CR,
President, Brackmann
Construction**

**Kansas City NARI member
since 2002**

816-331-1818 www.bcipro.com



How long have you been at Brackmann Construction?

Since its inception, in November of 1989. We incorporated in 2001.

What does your company do?

"We do Happy, we do Wow." Kitchen and bathroom remodeling are what we enjoy the most.

What are your hobbies outside work?

Reading, sitting on a beach, running after my grandson or taking the old cars for a spin.

What is your favorite NARI event?

The Remodeled Homes Tour.

New Member Minute

Erin George, Erin George, LLC

913-322-2655 Email: eringeorgellc@gmail.com

Erin George LLC provides bookkeeping services for the very small business, specializing in companies with no more than 5 employees.

What are your favorite local restaurants?

Arthur Bryant's and Westport Flea Market

What are your top three hobbies?

Quilting, baking pies, and going on float trips

Where is your favorite vacation spot?

Somewhere beachside



News to Know

- How sweet it is! The following NARI members were awarded homemade cookies for playing the NARI News cookie contest. Year to date winners are: Chris Van Horn, CMP Construction; Troy Stout, Schloegel Design Remodel; Erin George, Erin George LLC; Lauren Balestrieri, UDCP, L Marie Interior Design; Jon Otten, Capitol Federal Savings Bank; Karl Dunivent, Choice Cabinet; and Graham Power, CSW. You can win the August NARI News cookie contest by answering the questions in the email when August NARI News was sent out.
- Can your company offer JOB SHADOWING this coming school year to high school or community college students? Workforce Development Committee needs your help. Please say yes. Job shadowing can be as simple as a half day or full day watching one of your employees work. Let Gretchen Evans know if you can support job shadowing—kcnarigretchen@RemodelingKC.com
- Jeannie Nodder, Ferguson /Factory Direct Bath, Kitchen & Lighting Gallery, and Joe Reynolds were married on July 11, 2021...after a year-long COVID delay. They honeymooned in Antigua. See photo to the right.

- Consumer Seminars are Working for You! Kansas City NARI will again host a virtual consumer seminar on Tuesday, August 31 at 6:30 p.m. via Zoom. We began hosting consumer seminars in late 2019 with the first one in-person at the NARI office. In 2020 we made them virtual due to the pandemic and have hosted five in 2020 and 2021. These seminars draw ready-to-remodel consumers who ask amazing questions during this interactive session.



KC NARI Will Host Certified Lead Carpenter (CLC) Study Group starting September 28! Plan Now to Join!

- Are you a Lead Carpenter for remodeling projects?
- Do you control remodeling projects from start to finish and provide the balance of the carpentry on the project?
- Are you looking for a way to set yourself apart from the competition?

The CLC study group is designed for experienced field professionals who oversee the technical aspects of the project, including personnel management and material flow.

Who can join the local study group and take the test?
You are eligible to sit for the CLC exam if you meet the following requirements:

- Have a minimum of five years continuous practice in the remodeling industry, with at least two of those years as a lead carpenter - defined as a remodeling professional who is involved in tasks and has responsibilities beyond the technical production aspects of a project; he or she is responsible for customer contact and communication, supervision of subcontractors and employees, managing the job site, scheduling, and safety issues
- Successfully complete a comprehensive application that details your background and experience
- At the end of the study group sessions, successfully complete a 3-hour written examination on

preconstruction issues, technical knowledge, and special skills (people and job management)

- Submit all required application materials and fees

How much does it cost?

1. **Payable to NARI** with the application: \$400—**payment much accompany application and must be sent directly to NARI Headquarters. Click on this link to get the CLC application.**
2. Payable to Kansas City NARI: \$115 (We can invoice the company or charge the credit card on file.) This fee includes the study group and one lunch at a future chapter meeting where the new CLCs will be recognized.

The CLC study group will be facilitated by Jeff Penrose, CLC, CRPM, Schloegel Design Remodel. **The first meeting of the CLC study group will be Tuesday, September 28 at 4:30 pm at the NARI office. At the 1st meeting the class will determine the day of the week and time of day to meet each week for 10 weeks. The CLC test will be administered in early to mid-December.**



Kansas City NARI Thanks Our 2021 Corporate Sponsors

Official Sponsor

FERGUSON | FACTORY DIRECT

BATH, KITCHEN & LIGHTING GALLERY

Platinum Sponsor

MARVIN

Diamond Sponsors



Gold Sponsors



Business Built Together



Jake Roach, Martanne Construction, visited with Maria Koch, KC Lift & Elevator, at the July chapter lunch meeting.



Brandy Kimble, First National Bank of Omaha (FNBO) was excited to win a faucet from Architectural Surfaces at the July lunch. Graham Power with CSW shared her enthusiasm!

KC NARI Will Host Certified Remodeler Project Manager (CRPM) Study Group this Fall! Plan Now to Join the Group

- Project Managers are the field personnel who oversee every aspect of the project: customer satisfaction, personnel management, administration, etc. while working on the project or projects.
- Are you looking for a way to set yourself apart from the competition?

The **Certified Remodeling Project Manager (CRPM)** program addresses project cost management, communication, project planning, quality assurance, record-keeping and risk management.

Key Points Covered:

- Learn a system of accurate record-keeping and maintenance.
- Learn to put your risks into perspective and provide comprehensive ways to avoid them.
- Learn how to reduce punch list items.
- Learn a systematic set of tools and techniques to improve margins on any project.
- Learn how to schedule, monitor and adjust your project plan to fit your needs.

The **CRPM** will develop competencies and professionalize the project manager's role in the remodeling industry. The CRPM course is a structured class of remodeling project management fundamentals and a prep course to take the CRPM Certification exam.

To qualify for the CRPM designation, applicants must meet the following:

- Be employed by or own a firm primarily engaged in remodeling that operates in compliance with the NARI Code of Ethics and Standards of Practice
- Completed at least 16 hours of continuing education directly related to developing project management skills and knowledge **OR** be enrolled in the NARI CRPM education program
- Successfully completed a comprehensive application that details their background and experience
- Two (2) years continuous experience in the remodeling industry (any role) AND one (1) year as a remodeling project manager
- Receive NARI Headquarter approval of the application.
- Successfully complete a written examination (in one sitting)

that covers the six CRPM knowledge domains: project planning, communications, project cost management, quality assurance, recordkeeping, and risk management.

Fees for certification:

\$500/per person

Annual renewal fee: \$89

Steps to sign up for the Fall 2021 CRPM Study Group:

1. Fill out CRPM application and send to NARI HQ with applicable fee. Their current fee is \$500. **Click here to get the CRPM application.**
2. Email kcnari@RemodelingKC.com to confirm you want to be in the Fall 2021 CRPM study group. There is a \$115 per person study group fee from Kansas City NARI. (We can invoice the company or charge the credit card on file once your application is approved by NARI HQ.) This fee includes the study group and one lunch at a future chapter meeting where the new CRPMs will be recognized.
3. **The CRPM study group will be facilitated by Chris Peterson, MCR, CRPM, CLC, Schloegel Design Remodel. The study group will meet on Wednesdays at the NARI office from 4:00 to 6:00 with the first meeting on September 29.**

Make Time for the 2021 REMY Competition! What Projects Will You Enter?

KC NARI Chapter: 50 REMY Project Categories...What Category/Categories will your Company Win? Go to www.REMYKC.com to find out more!

2021 REMY Entry Fees:

Early Bird - \$165* if paid and entry submitted by **October 1, 2021**

Standard - \$175* if paid and entry submitted by **October 21, 2021**

Late Entry \$255* if paid and entry submitted by **October 25, 2021**

Pricing is based on when project is submitted; not on when entry was started.

*NARI members submitting a REMY entry for the first time will receive a \$35 discount on their first project entry.

NARI Family Fun Picnic!

WHEN: Saturday August 28 **TIME:** 4:00-8:00 p.m.

WHERE: Longview Lake, Shelter #4 (directions to come)

COST: \$10 per person, kids 11 & under FREE

- ♦ Eat at 5:00
- ♦ Meat provided by KC NARI
- ♦ Water provided--bring your own drinks otherwise
- ♦ Sides to Share! (we'll assign those later!)
- ♦ Bring your own lawn chairs
- ♦ **Kevo the Klow**n magician and balloon artist...great for all ages!



Thanks to our Family Fun Picnic Sponsors



KC NARI Golf Tournament...

Tournament Corporate Sponsor:

BATH & KITCHEN
IDEA CENTER

by **Winnelson**

**Wednesday,
September 15**

**Deer Creek
Golf Club
7000 W. 133rd St.
Overland Park**

12:00 p.m. Tee-Off

Shotgun Start-Scramble Format

Awards Presentation & DINNER at clubhouse following tournament

PRIZES GIVEN TO BEST TEAMS IN 3 FLIGHTS!!

Golf Fee: \$150 per golfer!!!

Includes sack lunch, green fees, golf carts, putting contest, golf gift, beverage tickets, door prize ticket & dinner

COMPANY: _____

CONTACT: _____ **PHONE:** _____

Number of Golfers _____ **x \$150 = \$** _____

Optional Golf Team Packages:

Sign up now and save \$10 per package!

Buy your packages now...save your cash on the course for more cold beverages!

Hole in One Package \$100 (Value \$140)

2 mulligans per golfer (one per golfer on Front 9, one per golfer on Back 9), Bryson DeChambeau Drive, 2 additional cards at the Poker Run hole, \$5 bet per golfer at the Betting hole, and 4 Barrow of Beverage tickets

Eagle Package \$80 (Value \$110)

2 mulligans per golfer (one per golfer on Front 9, one per golfer on Back 9), Bryson DeChambeau Drive, 1 additional card per golfer at the Poker Run hole, \$5 bet per golfer at the Betting hole, and 2 Barrow of Beverage tickets

Golf Team package: \$ _____

(golfers fee + golf team package) **TOTAL DUE: \$** _____

Please check one:

_____ The check is in the mail. _____ Please invoice my company.

_____ Use ACH on File or call me for details.

_____ Charge credit card on file or call me for details.

Questions?? Call 913.362.8833

*E-mail form to kcnari@RemodelingKC.com or fax to 913.362.8837,
or mail to KC NARI, 8015 Shawnee Mission Pkwy, Ste. 150, Merriam, KS 66202.*





ACH AUTHORIZATION FORM

AUTHORIZATION FOR DIRECT PAYMENT VIA ACH DEBITS

Direct Payment via ACH is the transfer of funds from your account for the purpose of making a payment.

I authorize the National Association of the Remodeling Industry, Kansas City Chapter (Kansas City NARI) to initiate electronic debit entries to my account, indicated below at the financial institution named below. In the event a debit is made to my account in error, I authorize Kansas City NARI to make a correcting entry under the condition that I am notified of said adjustment.

Financial Institution Information

Select One: ☐ Checking Account ☐ Savings Account

(Name of Financial Institution)

(Address of Financial Institution-Branch, City, State, & Zip)

(Account Name)

Amount of debit(s) or specify range of acceptable dollar amounts authorized:_____

(Financial Institution Routing Number)

(Account Number)

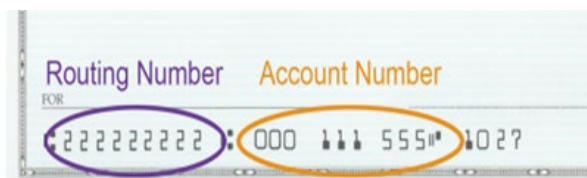
This authorization is to remain in full force and effect until Kansas City NARI receives writing that I wish to revoke this authorization. I understand that Kansas City NARI requires a reasonable time to act on it.

Signature of Account Holder:_____

Print Name:_____

Company Name:_____

Date:_____



Return completed form to kcنariDJ@RemodelingKC.com
or fax to 913.362.8837

Revised 5/26/2021.



Thank you to the following NARI contractor members for being a 2021 sponsor:

Master Craftsman

Architectural Craftsmen
Gartman Remodeling
Jason Wright Electric
Royal Garage Door
Schloegel Design Remodel
SERVPRO of Leavenworth & NW
Wyandotte Co. & West Topeka
Shack Built
Total Home Remodeling

Craftsman

ALH Home Renovations
All Current Electric
CHC Design-Build
Heiman Development Co.
Morgan Miller Plumbing
Outdoor Lighting Perspectives
Phoenix Renovation & Restoration
Plumbing Plus
Pyramid Roofing Company

Kansas City NARI Vision: Kansas City NARI is the premier resource for the remodeling industry and its consumers. All remodelers will want to be part of Kansas City NARI and customers will insist on contracting with our members.

Kansas City NARI Mission: Support member-focused education and encourage business relationships. To fulfill this mission, Kansas City NARI will serve its members by:

- Providing education and certification programs
- Offering networking and marketing opportunities
- Creating a public awareness that makes NARI a household name
- Growing a dynamic organization

Kansas City NARI Motto: Business built together.

Kansas City NARI Values:

- Kansas City NARI is committed to the following values as a measurement of all our actions:
- Member-focused-- Continually expand and/or improve quality services for NARI members.
- Financial Responsibility--Exercise sound financial management in the best interest of our members.
- Community Service--Foster a sense of community within the NARI membership as well as give back to the community in which we live and work.
- Cooperation--Provide an environment in which the members and leaders work cohesively for the betterment of NARI.
- Integrity--Demonstrate ethical business practices by following our Code of Ethics and showing respect for fellow members and the organization.
- Recognition--Honor the traditions that have been established of recognizing members, their companies and their employees for contributing to the professionalism of the remodeling industry.

